

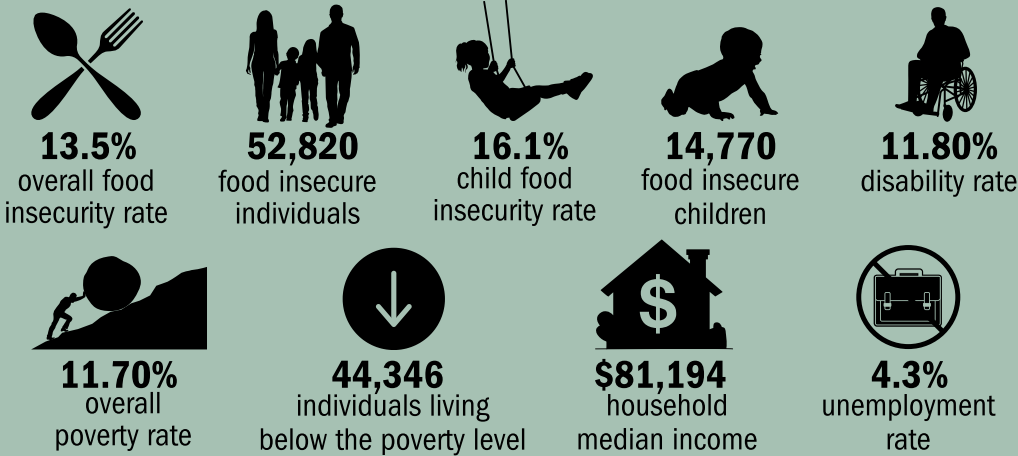
BUTLER COUNTY, OH

Total population: **389,910**
Residents eligible for foodbank services (200% FPL): **100,569**



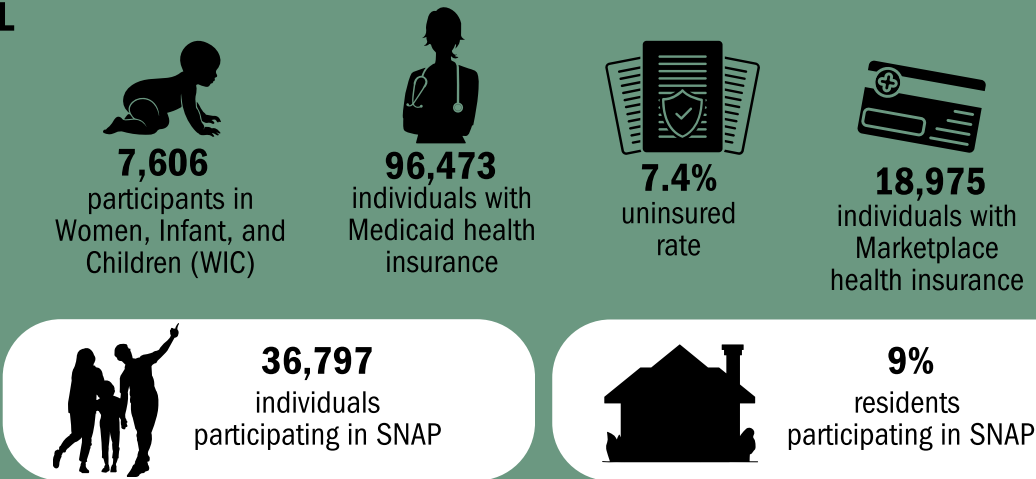
THE REALITY: HUNGER AND HARDSHIP

As everyday costs continue to rise faster than wages, many families struggle to afford groceries. Households with children are especially impacted, often forced to make difficult choices between food, rent, and utilities. Ongoing pressure on household budgets contributes to continued need for help with food.



THE BIGGER PICTURE: SOCIAL DETERMINANTS OF HEALTH AFFECT FOOD ACCESS

Work support programs like Supplemental Nutrition Assistance Program (SNAP), Women, Infant, and Children (WIC), Medicaid, and Marketplace coverage help families stay stable. By putting food on the table and ensuring access to health care, they prevent short-term struggles from turning into long-term crises.



GOOD NEWS: FOODBANKS ARE HERE TO SERVE OUR NEIGHBORS

Ohio's foodbanks and local partners provide nutritious food statewide. Through pantries and hunger-relief agencies, they serve families, children, and seniors, distributing millions of pounds of food each year to strengthen communities and fill gaps when other supports fall short.

The data shown is drawn from multiple sources (see footer). *Ohio Foodbank network data reflects duplicated counts of households and individuals served, so these numbers represent total instances of service, not unique households or individuals. This data is collected only at pantry visits.

